

WAGNERS

Composite Fiber Technologies (CFT)

LIGHT POLES



Wagners composite light poles are uniquely suited to provide a long lasting, aesthetic lighting solution to any residential, commercial or industrial project. The lightweight, rust-proof nature of using a Wagners composite light pole results in quicker and safer installation.

The durability and strength of a Wagners composite light pole provides customers with a long life asset. Wagners years of experience in composite structures have produced light poles from 10' to 30' servicing a wide array of industries. Choose from an existing pole or work with Wagners' full in-house design team to create your custom lighting solution.

PERFORMANCE ADVANTAGES

- » Compatible with all standard luminaire fittings
- » Quick and easy installation
- » Lightweight
- » Designed to withstand harsh weather environment
- » Resistant to acid sulphate soils
- » Cathodic protection not required
- » Inert, environmentally stable material

WAGNERS COMPOSITE PRODUCTS WILL NOT RUST, ROT OR CORRODE.



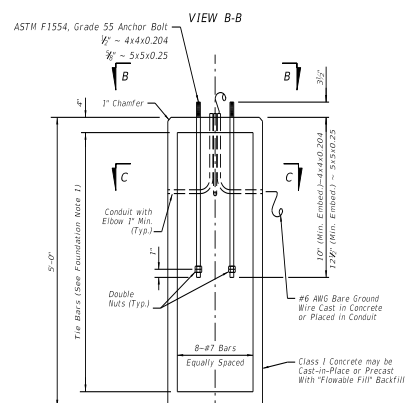
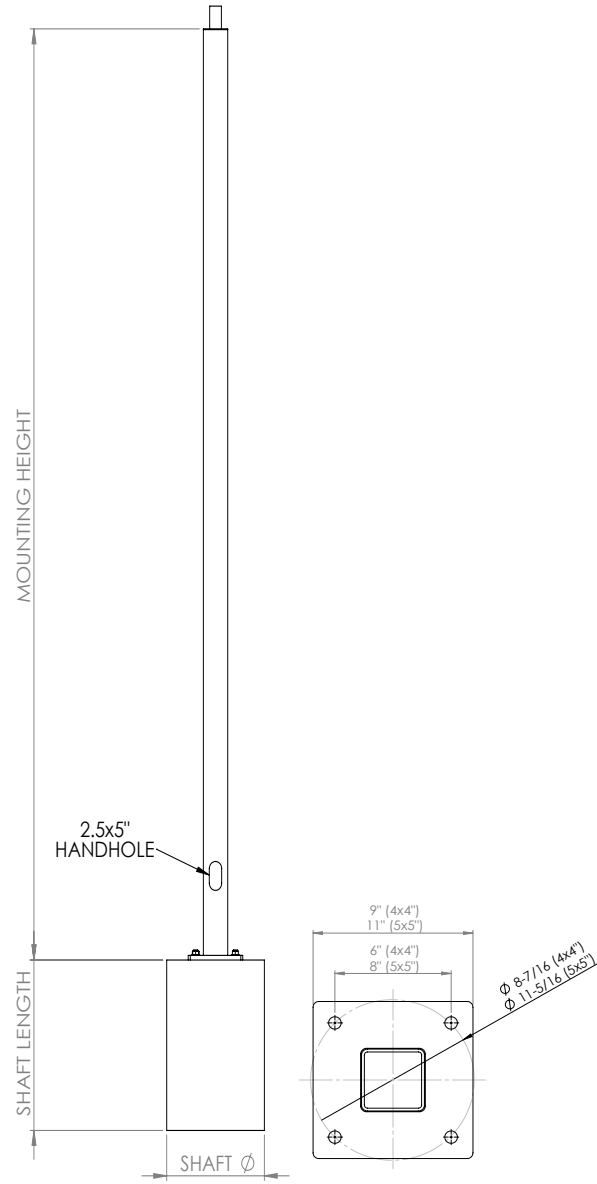
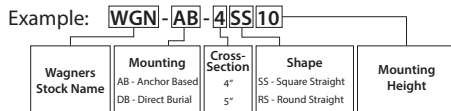
TECHNICAL DATA

Wagners Anchor Based Light Poles are designed to maximize cost efficiency and provide installation crews with a light weight alternative to steel.

All poles are coated in Wagners durable fluoropolymer coating and maintain a 25-year shine. The steel base plate is permanently bonded in place and provides an aesthetic finish with or without a base cover. Work with Wagners full in house design team to ensure your next lighting project is safe, simple and satisfactory.

Anchor Base Light Poles									
PRODUCT CODE	MOUNTING HEIGHT	DIMENSIONS							
		EFFECTIVE PROJECT AREA (EPA)				ANCHORE BASE (AB)		CONCRETE FOUNDATION	
		90 mph	100 mph	110 mph	120 mph	Bolt Hole	Weight	Shaft Diameter	Shaft Length
	ft.								
						in.	lb.	ft.	ft.
WGN-AB-4SS10	10	21.5	17.0	13.7	11.1	0.6875	39.3	1.50	4.25
WGN-AB-4SS15	15	12.9	9.8	7.5	5.7				4.25
WGN-AB-4SS20	20	7.4	5.2	3.5	2.3				4.50
WGN-AB-5SS15	15	28.7	22.1	17.3	13.6	0.8125	60.5	1.75	5.00
WGN-AB-5SS20	20	17.5	12.7	9.2	6.5				5.00
WGN-AB-5SS25	25	10.2	6.5	3.8	1.7				5.50
WGN-AB-5SS30	30	4.7	2.0	n/a	n/a				5.50

Product Code Explanation



FOUNDATION NOTES:
1. Foundation Tie Bars: #4 Tie Bars @ 12" centers (max.) or D10 (for W10) spiral @ 6" pitch, 3 flat turns top and 1 flat turn bottom.



Composite Fiber Technologies (CFT)

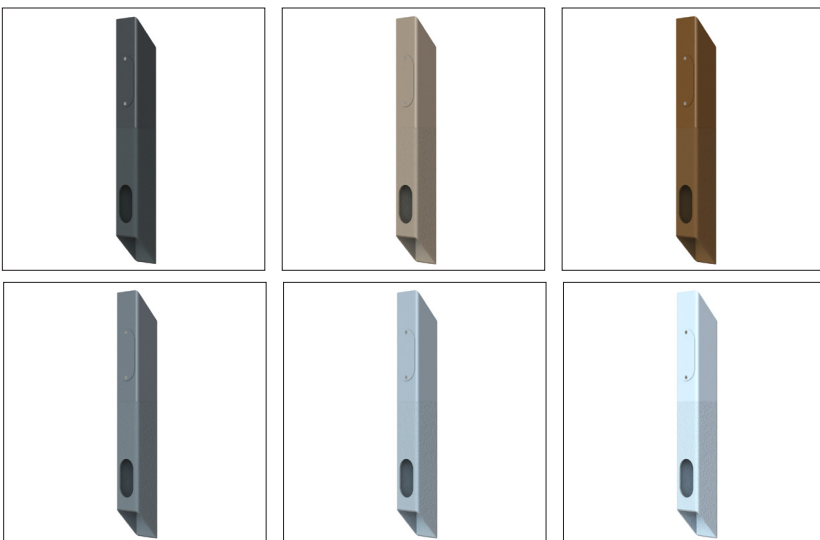
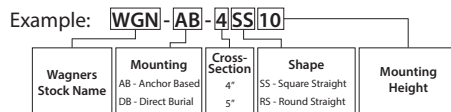
DIRECT BURIAL LIGHT POLES

TECHNICAL DATA

Wagners Direct Burial Light Poles are durable to all forms of weathering and corrosion, making them the perfect application in coastal or high PH environments. The low weight to strength ratio results in direct burial being the most cost effective solution available in the market. Requiring no attachment bolts or covers, Direct Burial poles can be quickly and efficiently installed and minimize down time to any light project. Reach out to Wagners for any enquiries on Direct Burial Light Poles.

Direct Burial Light Poles							
PRODUCT CODE	MOUNTING HEIGHT	DIMENSIONS					
		EFFECTIVE PROJECT AREA (EPA)				DIRECT BURIAL (DB)	
		90 mph	100 mph	110 mph	120 mph	Excavation Diameter	Shaft Length
	ft.					ft.	ft.
WGN-DB-4SS10	10	21.5	17.0	13.7	11.1	1.00	5.00
WGN-DB-4SS15	15	12.9	9.8	7.5	5.7		5.00
WGN-DB-4SS20	20	7.4	5.2	3.5	2.3		5.25
WGN-DB-5SS15	15	28.7	22.1	17.3	13.6	1.25	5.75
WGN-DB-5SS20	20	17.5	12.7	9.2	6.5		5.75
WGN-DB-5SS25	25	10.2	6.5	3.8	1.7		6.00
WGN-DB-5SS30	30	4.7	2.0	n/a	n/a		6.00

Product Code Explanation



WAGNERS

Composite Fiber Technologies (CFT)

LIGHT POLES

DESIGN

- » 7 year full replacement warranty
- » Designed in accordance with AASHTO and ANSI specifications
- » ASTM Grade F1554 Anchor Bolts and Base Plate cover included
- » Additional drilled holes available upon request
- » Steel base plate permanently bonded to pole to provide an aesthetic, durable finish
- » Standard 2 3/8 and 3 inches tenon or capped with pre drilled holes
- » 2.5 x 5 inches hand hole above ground with access cover
- » Consistent properties, engineered material with well understood characteristics
- » Color-fast: durability rating as "extra-long term"
- » Custom designs available

**LONG-LIFE INFRASTRUCTURE,
U.S.A. MANUFACTURED.**



CONTACT US

✉ info@wagnerscft.com

🌐 www.wagnerscft.com

📍 East Coast and Southeast States

+1(817) 807-2382

📍 West Coast and Northwestern States

+1(817) 470-7862

📍 Gulf Coast and Midwest States

+1(817) 470-7821

📍 Southwest States and Canada

+1(307) 763-0985